

**SECTION 09 30 43 – TILING ACCESSORIES****PART 1 GENERAL**

## 1.1 SUBMITTALS

- A. Action Submittals:
1. Product Data: Manufacturer's descriptive data and product attributes.

## 1.2 QUALITY ASSURANCE

- A. Manufacturers Qualifications: Firm specializing in work of this Section, with minimum [2] [ ] years' experience.
- B. Microorganism Resistance: Pass when tested to ASTM D4551.
- C. Water Vapor Transmission: [1.187 perms]
- D. Fire Hazard Characteristics: Maximum flame spread/smoke developed rating of [25/50,] [75/450,] [ ], tested to ASTM E84.
- E. Installer Qualifications: Firm specializing in work of this Section, with minimum [2] [ ] years' experience.

## 1.3 WARRANTY

- A. Manufacturer's lifetime year warranty for material defects and performance.
- B. Installer's [5] [ ] year installation workmanship warranty.

**PART 2 PRODUCTS**

## 2.1 MANUFACTURERS

- A. Contract Documents are based on products by Hydro-Blok (844) 588-9559, [www.hydroblok.com](http://www.hydroblok.com)
- B. Substitutions: [Refer to Division 01.] [Not permitted.]

## 2.2 MATERIALS

- A. Shower Pan:
1. Product: Hydro-Blok [Classic] [Low-Profile] Center Drain Pans
  2. Description: Prefabricated sloped shower pan.
  3. Composition: Waterproof extruded polystyrene core faced both sides with woven mesh and cementitious coating.
  4. Density: 2.0 PCF.
  5. Size: [36 x 36 inches x 1.50 inches thick.] [36 x 48 inches x 1.50 inches thick.] [36 x 60 inches x 1.50 inches thick.] [36 x 72 inches x 1.50 inches thick.] [48 x 48 inches x 1.50 inches thick.] [48 x 60 inches x 1.50 inches thick.] [48 x 72 inches x 1.0 inches thick.] [48 x 84 inches x 1.50 inches thick.] [60 x 60 inches x 1.00 inches thick.] [60 x 72 inches x 1.0 inches thick.] [60 x 84 inches x 1.5 inches thick.] [72 x 72 inches x 1.5 inches thick.]
  6. Drain location: Center.
  7. Extensions: Multi Extension, as required to suit project conditions.
  8. Shower Drains:
    - a. Product: Hydro-Blok Drain.

- b. Description: [ABS] [Brass] drain body with [stainless steel] [chrome] [brass] bronze] graphite] [black] drain cover.
- c. Meet ASME A112.18.2-2020/CSA B125.2-20.

\*\*\*\* OR \*\*\*\*

B. Shower Pan Kit:

1. Product: Hydro-Blok [Classic] [Low-Profile] Center Drain Pans
2. Description: Prefabricated sloped shower pan.
3. Composition: Waterproof extruded polystyrene core faced both sides with woven mesh and cementitious coating.
4. Density: 2.0 PCF.
5. Size: 36 x 72 inches x 1.50 inches thick.
6. Drain location: Off-set.
7. Extensions: Multi Extension, as required to suit project conditions.
8. Shower Drains:
  - a. Product: Hydro-Blok Drain.
  - b. Description: [ABS] [Brass] drain body with [stainless steel] [chrome] [brass] bronze] graphite] [black] drain cover.
  - c. Meet ASME A112.18.2-2020/CSA B125.2-20.

\*\*\*\* OR \*\*\*\*

C. Shower Pan:

1. Product: Hydro-Blok [Standard] [Thin] Single Slope Shower Pans.
2. Description: Prefabricated sloped shower pan.
3. Composition: Waterproof extruded polystyrene core faced both sides with woven mesh and cementitious coating.
4. Density: 2.0 PCF.
5. Thickness: [1.0]
6. Size: [36 x 60 inches] [60 x 36 inches] [48 x 72 inches] [72 x 48 inches]
7. Drain location: Center.
8. Extensions: Multi Extension, as required to suit project conditions.
9. Linear Drains:
  - a. Product: Hydro-Blok Linear Drain.
  - b. Description: Coated ABS drain body.
  - c. Meet ASME A112.18.2-2020/CSA B125.2-20.
  - d. Width: 73.5 x 4.5 x 1 inch.
  - e. Accessories: Provide as required to suite project conditions.
    1. Drain extension.
    2. Angled Access tray.
    3. Trim kit.
    4. End caps.
    5. Filler strips.
    6. Supports.

\*\*\*\* OR \*\*\*\*

D. Shower Ramp:

1. Product: Hydro-Blok [Classic] [Low-Profile] Ramp.
2. Description: Prefabricated sloped shower ramp.
3. Waterproof extruded polystyrene core faced both sides with woven mesh and cementitious coating.
4. Density: 2.0 PCF.
5. Size: 12 x 72 inches.
6. Drain location: Center.
7. Extensions: Multi Extension, as required to suit project conditions.

\*\*\*\* OR \*\*\*\*

- E. Wall and Building Board:
1. Product: Hydro-Block board
  2. Description: Waterproof extruded polystyrene core faced both sides with woven mesh and cementitious coating.
  3. Density: 2.0 PCF.
  4. Size: [36 x 60 inches x 1/4 inch] [36 x 60 inches x 1/2 inch] [48 x 64 inches x 1/2 inch] [48 x 96 x 1/2 inch] [36 x 60 inches x 5/8 inch] [36 x 60 inches x 1.0 inch] [25 x 48 inches x 1.5 inch] [36 x 48 inches x 1.5 inch] [48 x 60 inches x 2.0 inch]

\*\*\*\* OR \*\*\*\*

- F. Prefabricated Shower Curbs:
1. Description: Waterproof extruded polystyrene core faced both sides with woven mesh and cementitious coating.
  2. Density: 2.0 PCF.
  3. Size: [3-1/2 x 4 x 60] [3-1/2 x 4 x 96] [2 x 2-1/2 x 60] [2 x 2.5 x 83] inch.
- G. Prefabricated Niches:
1. Product: Hydro-Blok Recessed Shower Niche.
  2. Description: Prefabricated, waterproof XPS foam core coated with modified cement coating.
  3. Meet IAPMO PS 106.
  4. Onside dimensions: [16 x 28] [32 x 16] [16 x 16] [32 x 26] [16 x 22] inch.
- H. Prefabricated Shampoo Ledge:
1. Product: Hydro-Blok Shampoo Caddy.
  2. Description: Waterproof extruded polystyrene core faced both sides with woven mesh and cementitious coating.
  3. Meet IAPMO PS 106.
  4. Onside dimensions: [16 x 18] [32 x 16] [16 x 16] [32 x 26] [16 x 22] inches.
- I. Prefabricated Bench:
1. Product: Hydro-Blok Shower Bench
  2. Description: Waterproof extruded polystyrene core faced both sides with woven mesh and cementitious coating.
  3. Meet IAPMO PS 106.
  4. Size: [Large Suspended 22 x 31.1] [Medium suspended 17 x 24] [Large diamond 22 x 31.1] [Medium Diamond 22 x 31.1] inch.

## 2.3 ACCESSORIES

- A. Joint Sealant: Manufacturers single component urethane type meeting ASTM C920, Type S, Class 50.
- B. Fasteners: ASTM C1513 screws, hot-dip galvanized or fluoropolymer coated steel.

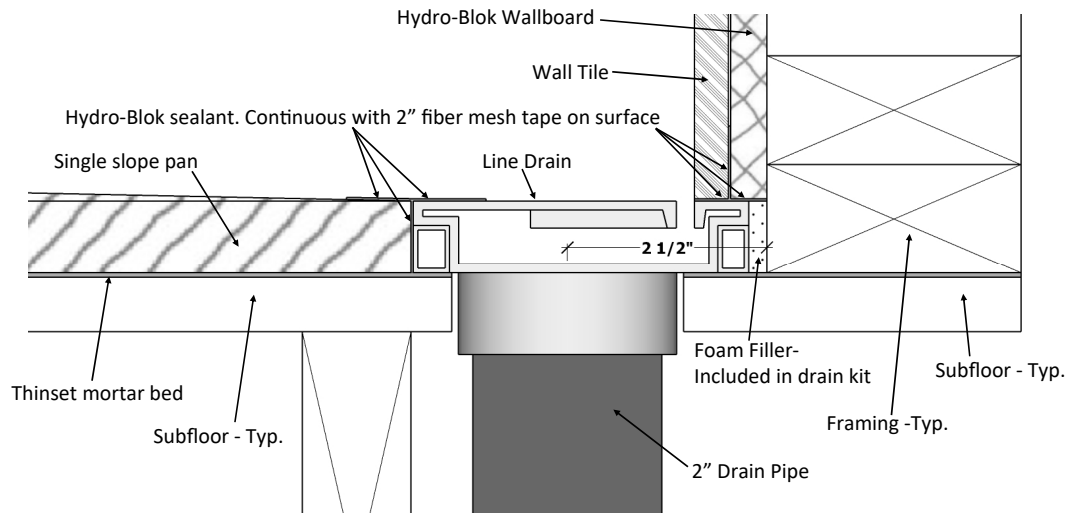
## PART 3 EXECUTION

### 3.1 INSTALLATION

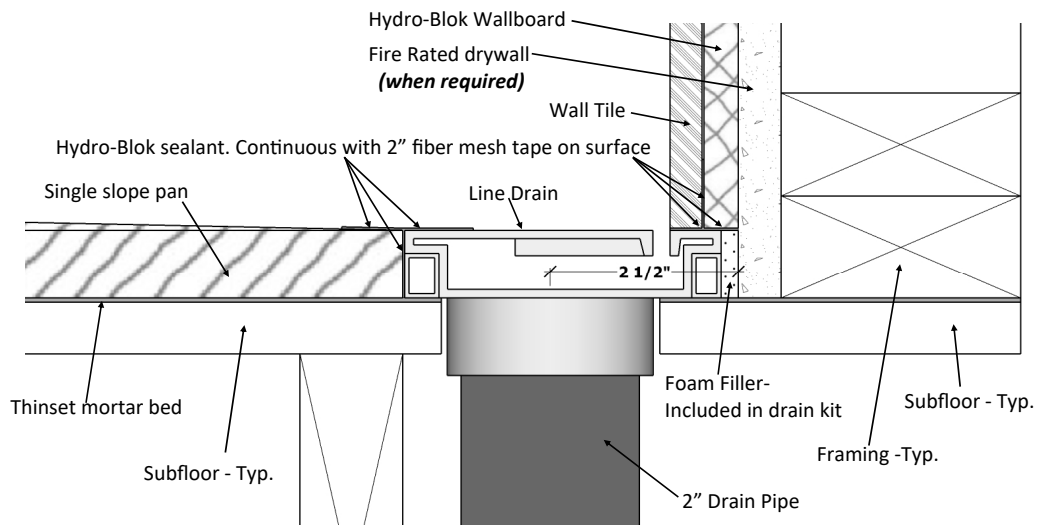
- A. Install in accordance with manufacturer's instructions.

# HYDRO-BLOK™

The BETTER Shower System



**Line Drain - Wallboard and Pan Joint Detail**



**Line Drain - Wallboard and Pan Joint Detail At Fire Rated Wall**

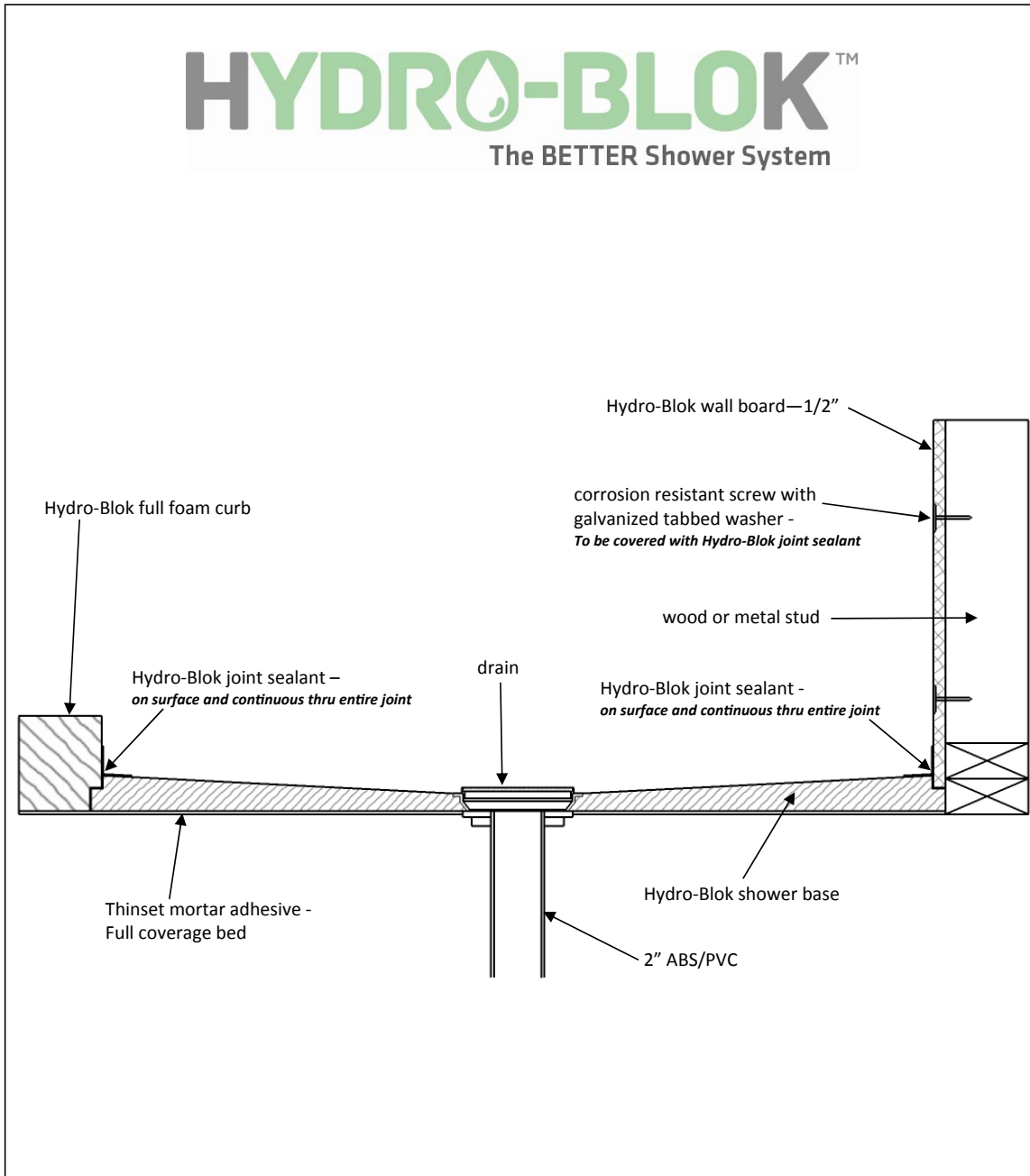
**Notes**

1. Installation to be completed in accordance with manufacturer specifications.
2. Drawings not to scale.
3. Sloped at 1/4" per foot to the drain.

Hydro-Blok USA • 6029 238th St SE, Woodinville, WA 98072 • www.hydroblokusa.com • T:425-286-6840 • F:425-286-6854

# HYDRO-BLOK™

The BETTER Shower System



**Notes**

1. Installation to be completed in accordance with manufacture specifications.
2. Drawings not to scale.
3. Sloped at minimum 1/4" per foot to the drain.

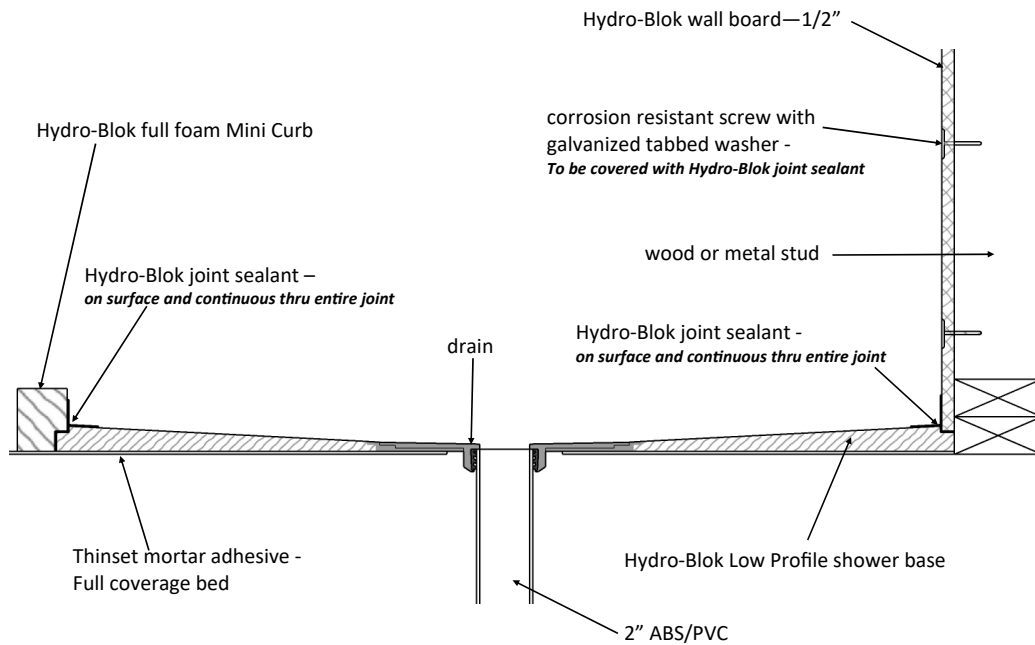
Hydro-Blok USA • 6029 238th St SE, Woodinville, WA 98072 • www.hydroblokusa.com • T:425-286-6840 • F:425-286-6854

Hydro-Blok Shower Base  
With Full Foam Curb

06.02.17

# HYDRO-BLOK™

The BETTER Shower System



**Notes**

1. Installation to be completed in accordance with manufacture specifications.
2. Drawings not to scale.
3. Sloped at minimum 1/4" per foot to the drain.

Hydro-Blok USA • 6029 238th St SE, Woodinville, WA 98072 • www.hydroblokusa.com • T:425-286-6840 • F:425-286-6854

Hydro-Blok **Low Profile**  
Shower Base  
With Full Foam Mini Curb

07.06.22

END OF SECTION